

Pet-friendly, convenient, modern: Renter finds a home at The Link

After living in Freehold for many years, Carol Riganti moved to Staten Island to be closer to her job as the office manager of a small business, but the house she rented never truly felt like home. When her one-year lease expired, she decided to return to Monmouth County.

Riganti began looking at available apartments and one stood out above all the others: The Link at Aberdeen Station. The Link, a brand-new community of luxury rental residences right next to the Aberdeen-Matawan train station, had just begun leasing.

The Link provided Riganti with everything she was looking for: a spacious apartment with a modern aesthetic in a rental community that is pet-friendly and conveniently located. The fact that it was so close to the Garden State Parkway meant she was just 18 miles from the Outerbridge Crossing, allowing her to get to and from work in about 40 minutes. She also liked that the shops and restaurants of downtown Red Bank were just a 20-minute drive away. She wouldn't be using the train to commute, but she knew the convenience of having the train station right next to the building would come in handy for weekend trips to Manhattan.

Riganti signed a lease and moved in this past March, becoming one of The Link's first residents.

"To me, everything about the place was great. I loved the décor, it was actually very close to work for me, and the fact that they took my dog was huge," Riganti said. "I love the convenience of living here. I have never lived in an apartment building before and I

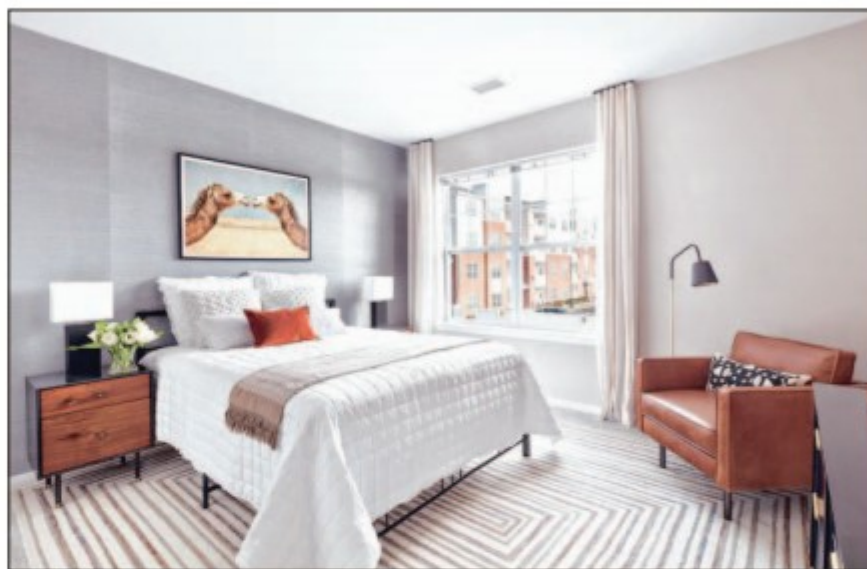


PHOTO COURTESY OF BNE REAL ESTATE GROUP

Near Red Bank and the Jersey Shore, The Link at Aberdeen Station is a new, pet-friendly rental property with modern styling and upscale amenities.

was actually a little nervous about it, but I really love it. If something happens, even if it's just a lightbulb going out, I can call maintenance and someone comes running down the hall with a lightbulb and a ladder. The building staff is really friendly, and when you have such great neighbors like I do, it really completes the experience."

Riganti chose a two-bedroom apartment at The Link for her and her dog Dazie. The residence is spacious enough to fit all of the furniture she had when she lived in a house. The kitchen boasts brand-new appliances and the in-unit washer and dryer is very useful. Riganti describes its appearance as a "neutral, modern look" that makes her feel relaxed and at home.

"Another thing that is important to me is that the place is really clean," Riganti added. "I'm a big clean freak, so living in a place that is clean, open and inviting is a big deal."

The Link has come a long way since Riganti moved in, which was around the time of its grand opening. Her car was one of the only ones in the parking lot for a few weeks. Now she is surrounded by friendly neighbors who often barbecue by the pool together on summer evenings, or order pizza together and hang out. The burgeoning on-site retail has also contributed to the community's vibrancy, with Brooklyn Bagelry opening recently and Frutta Bowls expected to open soon.

The Link provides a full complement of upscale amenities designed to encourage interaction among residents, cater to individual health and wellness, and foster a social atmosphere. They include a vibrant social lounge, commercial-grade fitness center, various work-from-home areas, and an outdoor swimming pool with BBQ area.

Riganti uses many of the amenities, particularly the outdoor pool and BBQ area. She has a membership at a nearby gym, but likes the fact that she also has an on-site fitness center just steps from her front door. The community's dog run recently opened, which she also plans on using regularly.

Designed by Thomas Brennan Architects, with interiors curated by Minno and Wasko Architects and Planners, The Link at Aberdeen Station offers a collection of upscale rental residences starting from the \$1,600s. Leasing specials are currently being offered in select buildings. The apartments boast modern style and functionality, with a range of layout options available.

For more information, www.RentAtTheLink.com or call 855-230-3980.